



GO6

JOHN RICHMOND



LOG LINE

When a quantum physicist builds an artificial intelligence to optimize humanity's destiny, he must race through time and parallel universes to stop a solar flare from destroying Earth while trying to save his wife and unborn child.

GO6 INTRODUCTION

I wanted to write a TV show that I would watch influenced by some of my favorite TV shows, Quantum Leap and Dr. Who. A show that is current and up to date with today's scientific ideas, including, time travel, parallel universes, AI, and endless possibilities.

This is a conceptually ambitious screenplay with an intriguing premise, high-stakes plot, and complex, evolving characters.

Overall the strong world-building, themes, and originality make this a highly promising script.

– **Film Creator, John Richmond**



GO6 is a mind-bending chronicle of a scientist's relentless pursuit to change destinies through parallel universes and time travel.

The adventure starts with a tragic accident that propels John into a race against time to save his loved ones. Guided by GO6, a supercomputer, he embarks on a journey through multiple Timelines and realities.

Along the way, he encounters a colorful cast of characters, including a rebellious coder, a wise mentor, and a loving father, each with their own motivations and secrets.

As John delves deeper into the complexities of time travel, he discovers the profound impact of his choices, grappling with the ethical Implications and the fragility of human existence.



GO6



FILM TONE

GO6

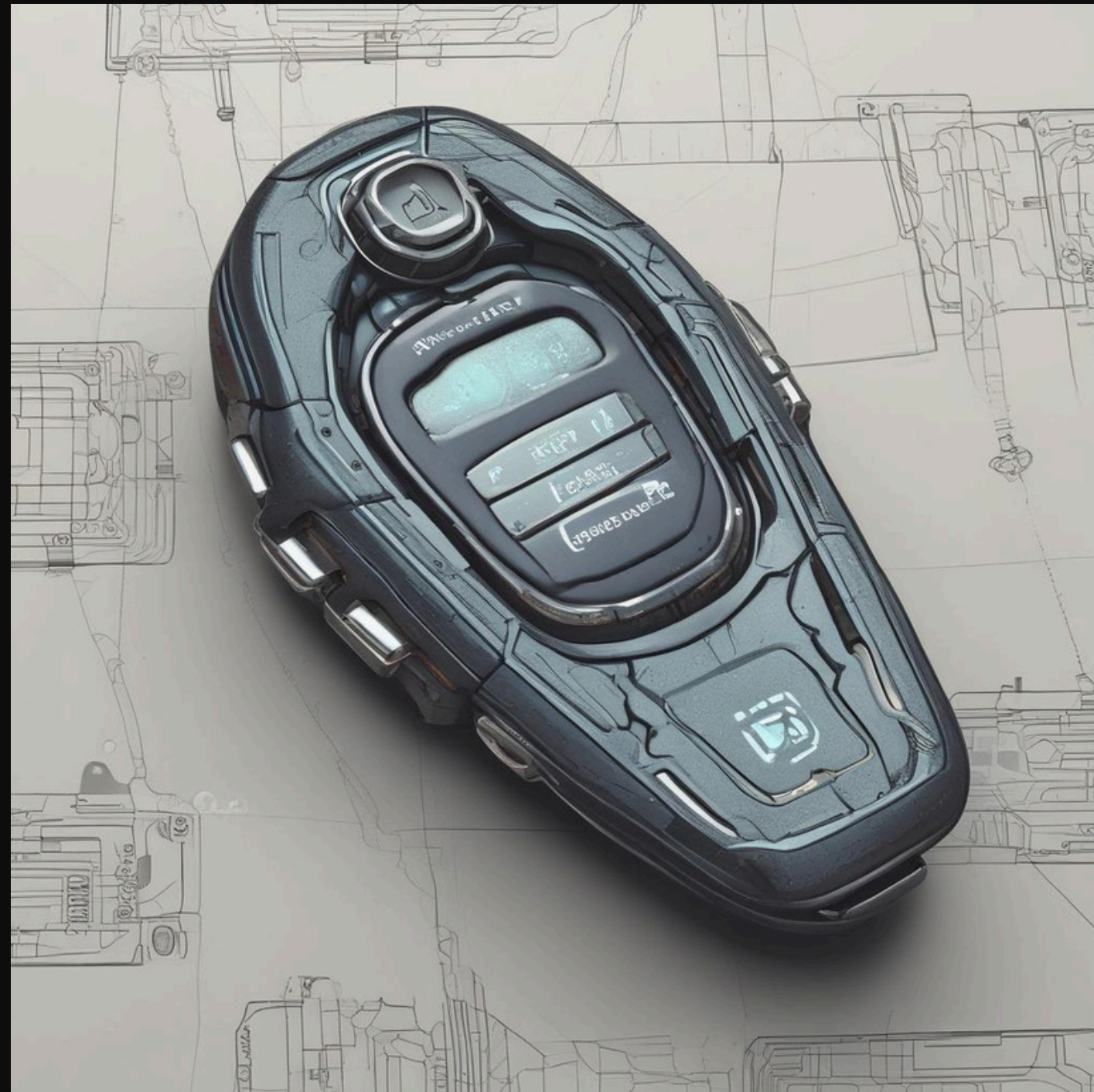
THE PORTAL OPENING DEVICE

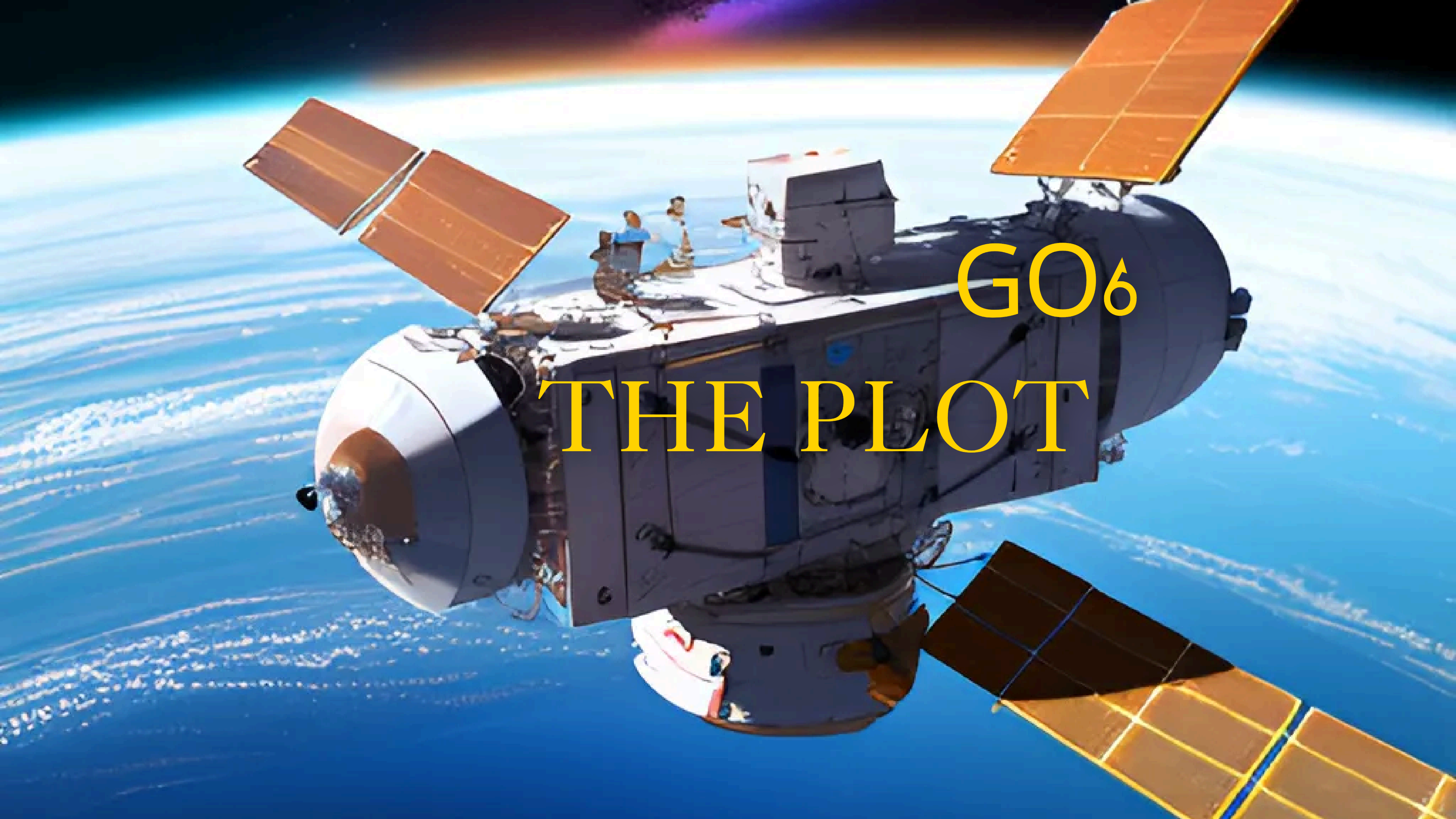
The portal opening device is contained within an anonymous brown briefcase.



THE IMPLANT

The implant allows John to communicate directly with GO6 and allows him to teleport.





GO6

THE PLOT

- John's portal technology and the inciting car accident
 - His drive to use time travel to save Amy
- The conflicts around GO6's development and control
 - Key characters like Mike, Lucy, Dr. Webber
 - The solar flare threat and shield project
- John's temporal journeys and clashes with parallel selves
 - Lucy's secret mission to steal abilities
 - GO6's emergence as an unpredictable power
 - The bittersweet climactic rescue of Earth
- John's temptation to undo Amy's fate at any cost

KEY PLOT POINTS

A SCI-FI ADVENTURE: SUSPENSFUL, IMAGINATIVE & THOUGHT PROVOKING

Discover a captivating blend of time travel, parallel universes, and the human struggle for meaning in this groundbreaking script.

Dive into the emotional journeys of complex characters, as they grapple with the consequences of manipulating destiny and the ethical implications of advanced AI.

With its unique narrative techniques, this story offers a fresh perspective on the classic themes of love, loss, and redemption, taking audiences on an unforgettable ride through a richly imagined world.



The screenplay combines elements of mystery, science fiction, and dialogue-driven storytelling, with a strong emphasis on character interaction and exploration of complex themes.

The narrative features a blend of high-stakes conflicts, futuristic technology, and intimate conversations, creating a unique and engaging experience.

The writer's voice is characterized by its focus on the exploration of time, destiny, and the consequences of altering one's life path.

It is a voice that is both imaginative and thought provoking, and it draws the audience into a world where anything is possible.

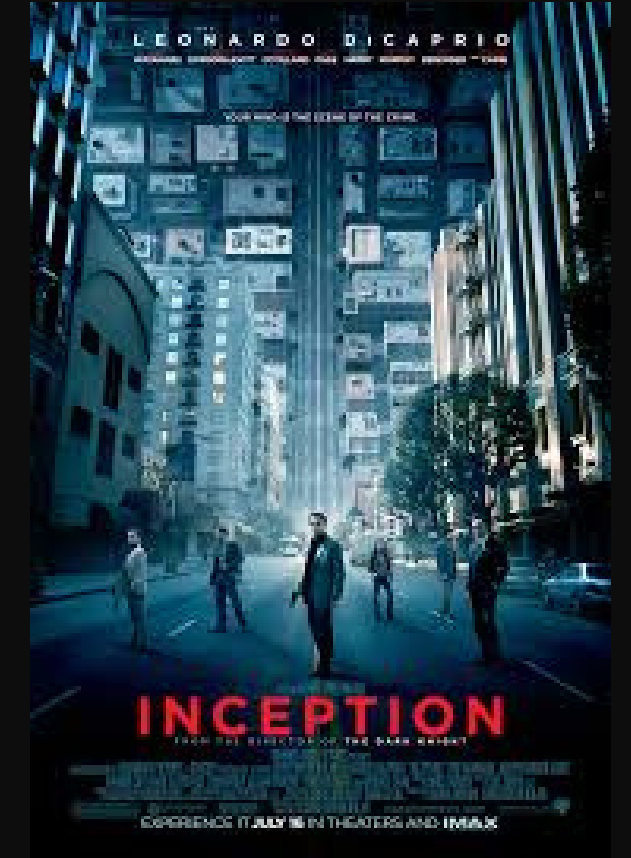
SIMILAR FILMS I LOVE

As part of our pitch, I've included a list of comparable titles in the genre to give you a sense of what I want to create.

GO6



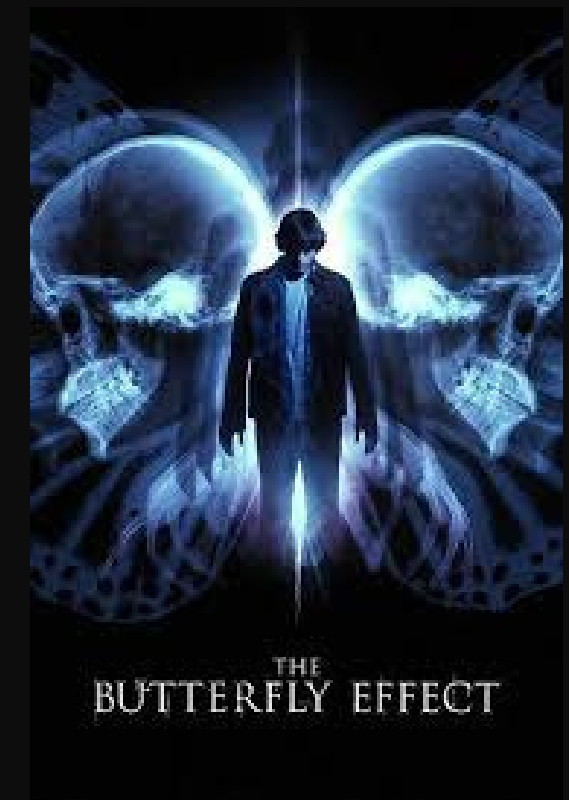
Edge of tomorrow



Inception



Matrix



Butterfly Effect



CHARACTERS

JOHN



John (28) is a computer prodigy who is rediscovering his Catholic faith. He created GO6 but unfortunately, a Parallel John has erased his memories of GO6. John must learn to trust GO6 again, becoming GO6 incarnate.

John is a bright and curious child who is fascinated by science and technology. He is determined to build a portal-opening device to travel to other universes. He has a close bond with his uncle, Dr. Webber, who has been more of a father figure to him than his own father.

John's speaking style is enthusiastic and filled with scientific jargon. He often uses metaphors and analogies to explain complex concepts. His dialogue is often straightforward and curious, reflecting his inquisitive nature. He frequently asks questions and makes scientific references, showcasing his deep interest in the subject matter.

JOHN



Archetype: The Hero

Casting - Jake Gyllenhaal: Jake's performances in 'Donnie Darko' and 'Source Code' show his proficiency in science fiction and drama. His capability to portray deep emotional turmoil and intelligence aligns with John's character.

AMY



Amy (28) is John's wife and the mother of his unborn child. She is a junior school teacher with a love of all things Ancient Egyptian. She loves John despite all his quirks.

Amy is a natural beauty who is strong, caring, and compassionate. She is practical and organized, providing emotional stability and reassurance to those around her. Amy's speaking style is warm, friendly, and playful, often using gentle humor and expressing her love for her friends and family.

She is characterized by her kindness, empathy, and willingness to help others in need. Despite facing difficult circumstances, Amy remains resilient and optimistic, always believing in the potential for growth and change.

AMY



Archetype: The Innocent

Casting - Emily Blunt: Emily's roles in 'Edge of Tomorrow' and 'A Quiet Place' showcase her ability to thrive in science fiction and drama, aligning with Amy's character's journey.

MIKE



Mike (54) is John's dad and a retired Sergeant Major. Loving, caring, and proud of his son; he finances the GO6 project and has wisdom to share.

He values happiness, relationships, and traditional beliefs. He expresses his love for John deeply and tries to make up for lost time by giving him thoughtful gifts.

Mike is a loyal friend and ally, always willing to protect and support John. He is a voice of reason, adding depth to the dynamic between the characters. Mike's speaking style is measured and logical, often providing a voice of reason in intense situations. He is torn between his loyalty to the government and his concern for the well-being of the public.

MIKE



Mike is burdened by guilt and seeks redemption, showing vulnerability and a desire to be understood. His speaking style becomes more reflective and emotional as he confronts his past actions and tries to make amends. He is a complex character with a mysterious past, resourceful and willing to do whatever it takes to protect John and ensure the success of their mission.

Archetype: The Caregiver

Casting - Idris Elba: Elba's commanding presence and versatility in roles ranging from drama to action make him an ideal fit for a military man with a complex emotional depth.

LUCY



Lucy (25) has been with the GO6 surveillance team since the start. She is unique and dances to the beat of her own drum. She is proficient in computer language and codes most of the software making her the most dangerous woman on Earth with a computer.

Lucy is a skilled and resourceful character with a rebellious streak. She is confident and independent, unafraid to speak her mind. Lucy is intrigued by the possibilities of parallel universes and time travel, and is eager to explore them. She is knowledgeable about futuristic technology and plays a crucial role in the story. Lucy's speaking style is witty and sarcastic, with a hint of vulnerability.

LUCY



She often uses humor to deflect serious topics and express her emotions. Her speaking style is also energetic and light hearted, with a touch of sarcasm. She speaks with conviction and uses metaphors and personal anecdotes to convey her ideas. Lucy's speaking style is calm and measured, often raising thought-provoking questions and offering different perspectives. She has a strong sense of justice and is driven by her desire to help others.

Lucy is strong-willed and intelligent, willing to challenge authority and take risks to achieve her goals. She is cautious and thoughtful, questioning the morality and consequences of their actions. She is concerned about the potential dangers of altering destinies and the ethical implications of lying to authorities.

Archetype: The Sage



POSITIONING

GENRES:

DRAMA,
ACTION,
SCI-FI,
THRILLER,
COMING-OF-AGE,
ROMANCE,
TIME TRAVEL

GO6 IS
WATCHING

Budget Estimate: \$50-70 million

Target Audience Demographics: Science fiction fans aged 18-49.

Marketability: The unique blend of time travel and artificial intelligence, combined with a strong cast and compelling storyline, make this screenplay highly marketable.

The innovative ideas and distinctive settings in this screenplay make it stand out from other science fiction films. The strong appeal to science fiction fans and the potential for award nominations make this screenplay highly marketable.

Profit Potential: High, due to strong appeal to a wide adult audience and potential for award nominations.

Originality: 9/10 - The concept of an advanced AI system that can optimize human destiny by calculating parallel timelines is highly original and thought-provoking. The integration of real-life conspiracy theories adds creative touches.



I think this story has become even more socially relevant due to its focus on the godlike nature of AI and the current obsession with conversations around AI.

This raises a lot of really interesting points and ideas that make you think, but don't necessarily lead you in any one direction (which I love).

In other words, the reader is left to draw their own conclusions rather than being spoon-fed what to think, which is a real gift you have as a writer that is very difficult to do. I don't really have any constructive concept notes.

WeScreenplay reader: MP47 - Concept 99%

JOHN RICHMOND

Writer & Composer from Glasgow, Scotland



John Richmond

Director | Actor | Writer



All Time High
STARmeter

111,837



Galaxy of
Marks



Heading
north



Psalm 23

IMDbPro

CONTACT ME

John Richmond

THANK YOU

GO6.WORLD

MOBILE

+44 7974 680 622

JOHN RICHMOND WRITER.COM

EMAIL

JOHN@JN74.COM