



Gardylloo

JOHN RICHMOND



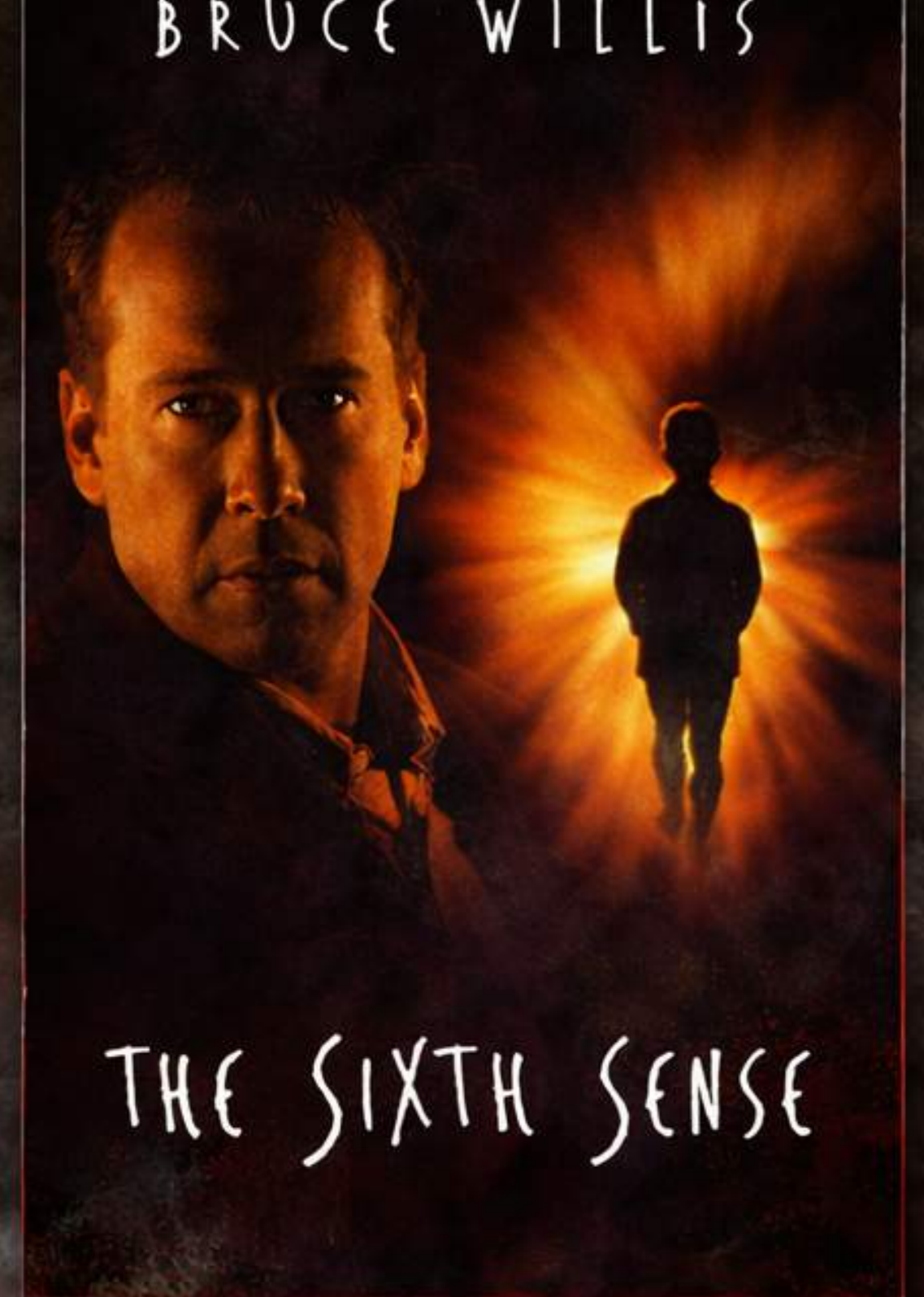
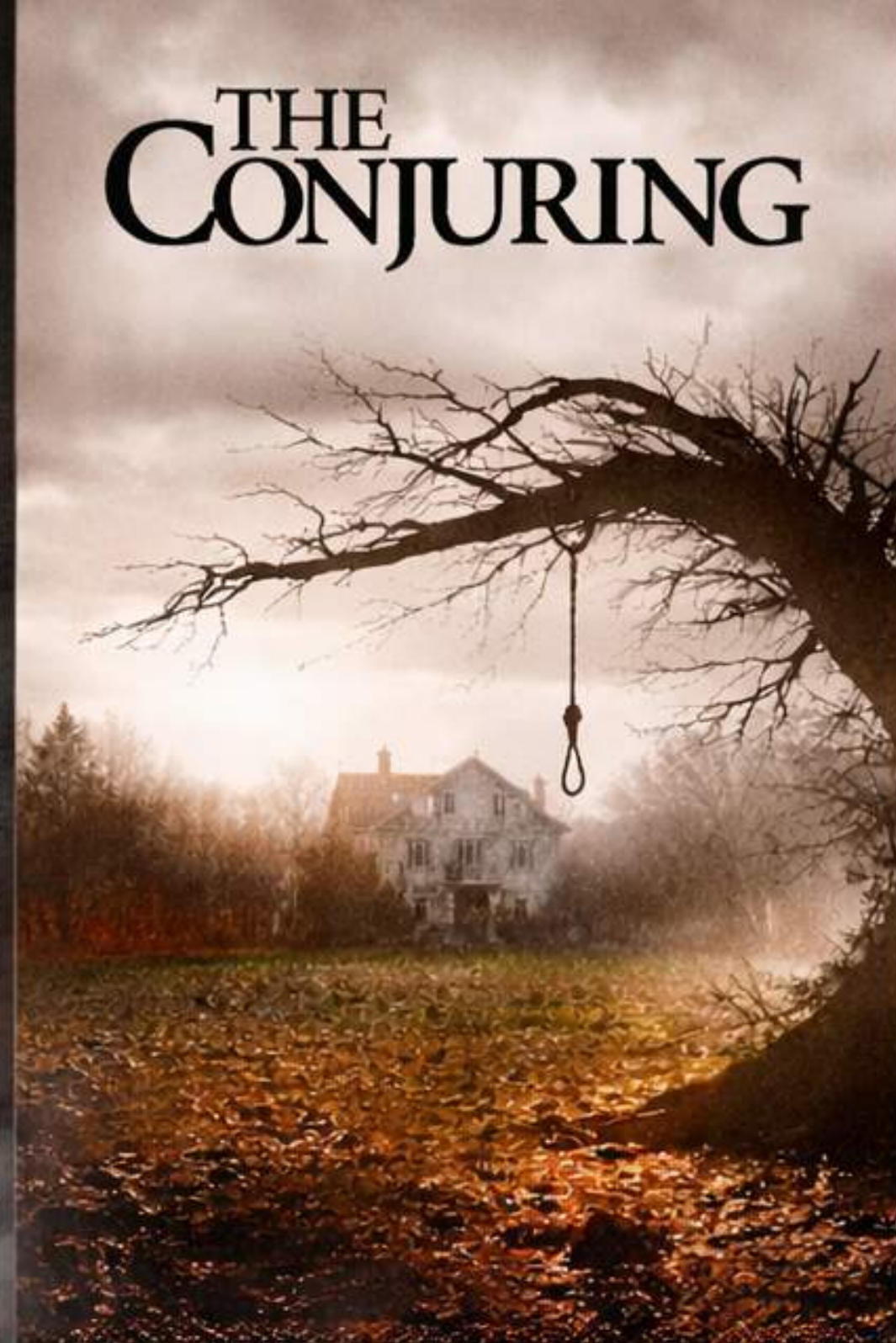
FEATURE

SUPERNATURAL HORROR



LOG LINE

When a guilt-ridden Edinburgh ghost tour guide inherits a cursed legacy, he must decode a 19th-century chain-letter spell and outwit Scotland's death-washer spirit to free trapped children's souls, before the curse spreads worldwide.



THE OTHERS meets *THE CONJURING*
with a *SIXTH SENSE* twist.



THE HOOK

Haunted Edinburgh, cursed letters, and life-or-death quests—perfect for a Halloween night where every shadow hides a secret and every corner could be your last.



PLOT



Deadly fires for being a witch



Other witches are targeted around Edinburgh that night.



Meet the Bean-Nighe, a spectral enforcer who washes the garments of the dead and ensures the curse continues: anyone who fails to forward the letters within two hours is doomed



Simon, the new Lord of the manor. can now see ghosts.



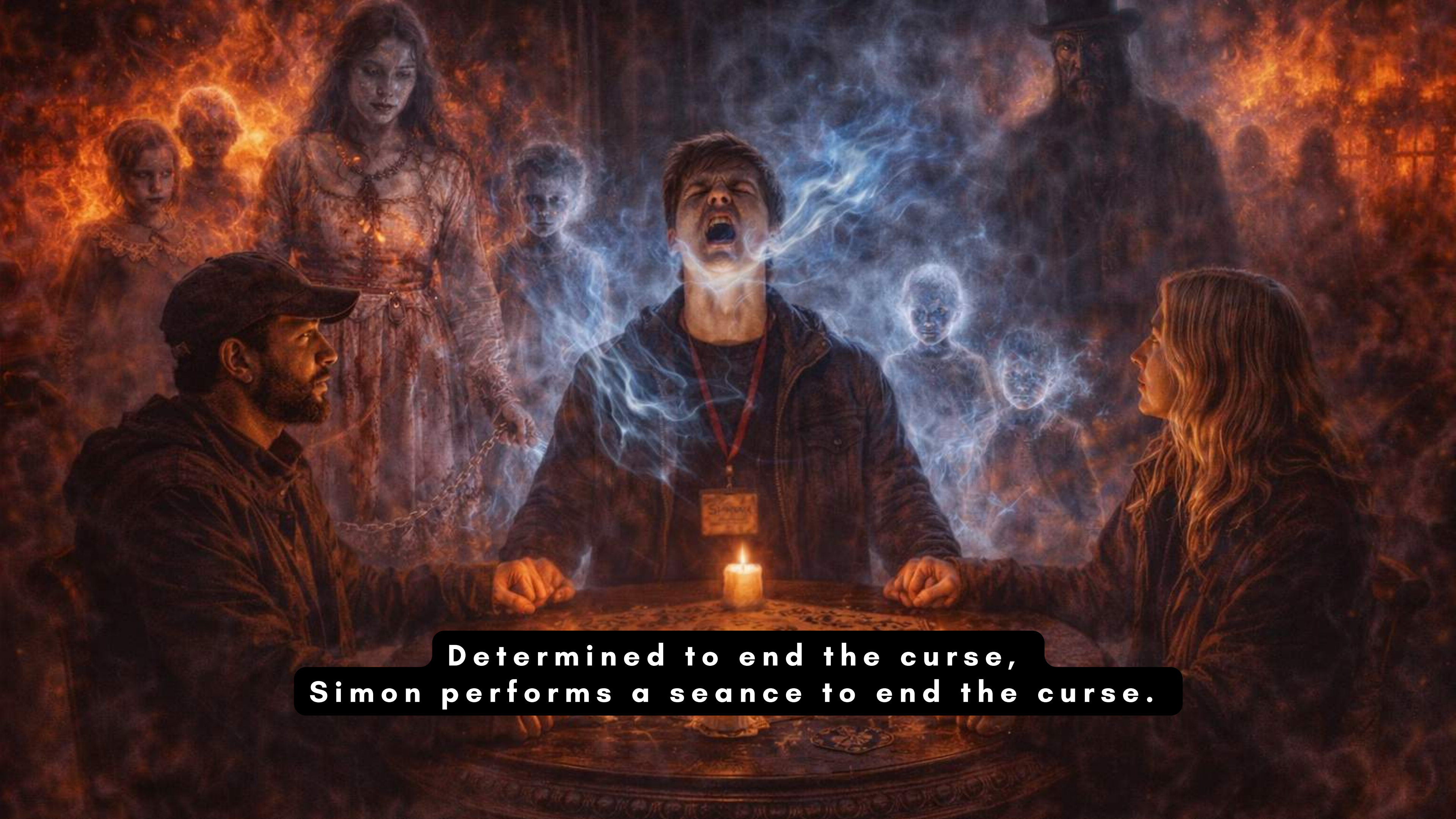
Racing against time, Simon must unravel the centuries-old mystery, confront restless spirits, and break the curse before it claims more victims.



His quest takes him through Edinburgh's most haunted places.



Both 19th century and modern day Edinburgh hold clues.



**Determined to end the curse,
Simon performs a seance to end the curse.**



The veil between the living and the dead is thin.

“Gardylou” explores themes of life, death, and the supernatural, integrating philosophical and ethical dilemmas adding layers to the narrative.

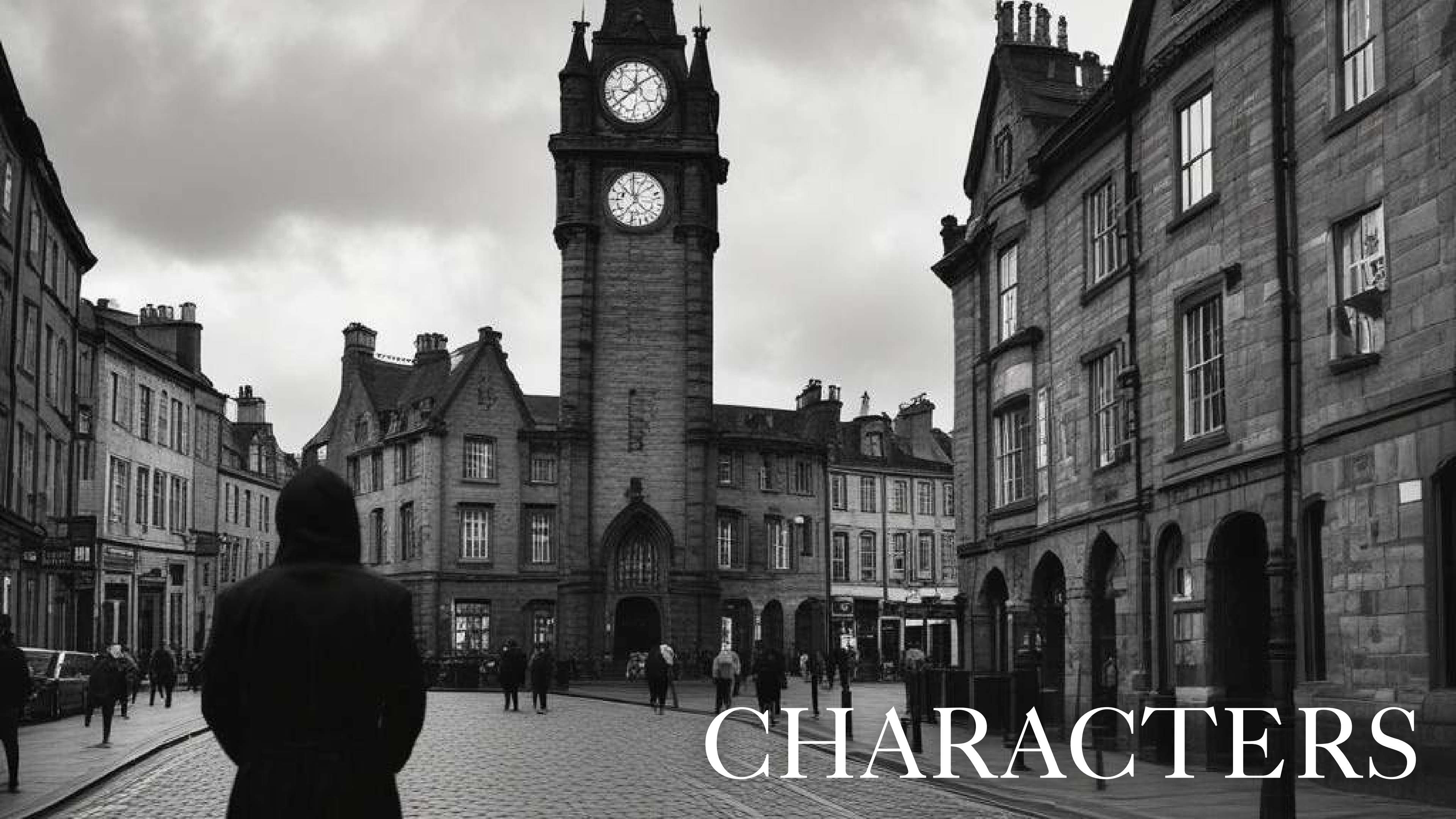
The authentic and relatable characters, combined with the original and fresh approach to familiar scenarios, make this script a compelling and engaging read.





FILM TONE

Gardylloo



CHARACTERS

SIMON



Simon is an experienced and knowledgeable ghost tour guide with a passion for the supernatural. He is enthusiastic, confident, and authoritative, using dramatic pauses and gestures to create a spooky atmosphere.

Simon's unique phrases and distinct characteristics include his extensive knowledge of historical facts, his ability to interact with supernatural elements, and his captivating storytelling style.

CLAIRE



Claire is the kind of person whose warmth you feel the moment she enters a room. She's deeply loyal and supportive, always standing by the people she loves, especially her family. Her actions reflect a quiet strength—she's the one who makes sure everyone is cared for, often putting her own needs aside to prioritize the well-being and happiness of her loved ones.

Thoughtful, nurturing, and empathetic, she's someone who balances strength and gentleness effortlessly, creating a sense of stability and love wherever she is.

BEAN-NIGHE (BEN NEE-YAY)



A spectral harbinge enforcing Lady Elspeth's curse.

She washes the garments of those doomed to die, appearing as a ghostly, pale woman with haunting eyes and a mournful presence.

Though terrifying, she is a necessary agent of the curse, representing the inevitability of fate and vengeance.

LADY ELSPETH MACRAE



A noblewoman from 1865 whose seven children were killed in a fire. Her grief is bound into crimson-sealed chain letters that perpetuate the curse.

She is both tragic and vengeful, her spirit demanding justice while shaping the supernatural forces haunting Edinburgh.

SORAB



One of Simon's loyal companions, knowledgeable in folklore and the occult.

Sorab is analytical and cautious, often serving as the group's researcher and strategist, helping Simon interpret clues hidden in the cursed letters and ghostly visions.

DUKE



The physically strong and protective member of the team. Duke brings courage and muscle when the group faces dangers, both spectral and human. Despite his intimidating appearance, he is compassionate and deeply loyal to his friends, providing grounding in tense moments.



The new curse spreads, first stop - New York



Gardylou: Haunted Edinburgh, Celtic folklore and emotional horror.

JOHN RICHMOND

Writer & Composer from Glasgow, Scotland



John Richmond

Director | Actor | Writer

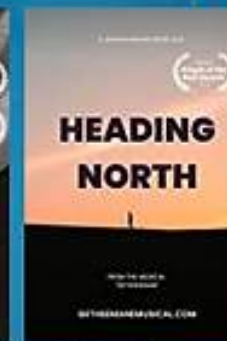


All Time High
STARmeter

111,837



Galaxy of
Marks



Heading
north



Psalm 23

IMDbPro

CONTACT ME

John Richmond

THANK YOU

MOBILE

+44 7974 680 622

JOHN RICHMOND WRITER.COM

EMAIL

JOHN@JN74.COM